

Allen

SEMI-ANNUAL REPORT FOR INDUSTRIAL USERS REGULATED BY 40CFR433

Attn: Allen Gilliam Water Div NPDES Pretreatment

(1) IDENTIFYING INFORMATION

A. LEGAL NAME & MAILING ADDRESS:
Baxter Healthcare Corporation
1900 N. Hwy. 201
Mountain Home, AR 72653

B. FACILITY & LOCATION ADDRESS:
Baxter Healthcare Corporation
1900 N. Hwy. 201
Mountain Home, AR 72653

C. FACILITY CONTACT: Carolyn Walker, Env. Representative TELEPHONE NUMBER: 870-424-5336

(2) REPORTING PERIOD—FISCAL YEAR From Feb. 1 to Jan. 31 (Both Semi-Annual Reports must cover Fiscal Year)

A. MONTHS WHICH REPORTS ARE DUE:
February & August

B. PERIOD COVERED BY THIS REPORT:

FROM: 08/01/2009 TO: 01/31/2010

(3) DESCRIPTION OF OPERATION:

A. REGULATED PROCESSES

CORE PROCESS(ES)

CHECK EACH APPLICABLE BLOCK

- X Electroplating
Electroless plating
Anodizing
X Coating
Chemical Etching and Milling
Printed Circuit Board
Manufacture

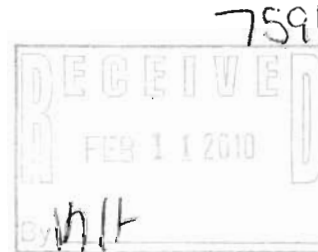
ANCILLARY PROCESS(ES)\*

LIST BELOW EACH PROCESS USED IN THE FACILITY

Cleaning, Polishing, Grinding

B. CHANGES: SUMMARIZE ANY CHANGES IN THE REGULATED PROCESS SINCE THE LAST REPORT. ATTACH AN ADDITIONAL SHEET IF THE SPACE BELOW IS INADEQUATE. PROVIDE A NEW SCHEMATIC IF APPROPRIATE.

ARPO0005
03-00002



complete/compliant
no further action necessary
AS

C. NUMBER OF REGULAR EMPOLYEEES AT THIS FACILITY:

800 Employees

D. {RESERVED}

**(4) FLOW MEASUREMENT**

INDIVIDUAL & TOTAL PROCESS FLOWS DISCHARGED TO POTW IN GALLONS PER DAY

Process	Average	Maximum	Type of Discharge
Regulated (Core & Anc)	1,050	1,050	Batch
Regulated (Cyanide)	NA	NA	NA
§403.6(e) Unregulated*	30,260	30,260	Batch/Continuous
§403.6(e) Dilute	NA	NA	NA
Cooling Water	48,443	48,443	Continuous
Sanitary	42,588	42,588	Continuous
Total Flow to POTW	122,344	122,344	*****

\* "Unregulated" has a precise legal meaning; see 40 CFR403.6(e).

**(5) MEASUREMENT OF POLLUTANTS**

A. TYPE OF TREATMENT SYSTEM		B. COMMENTS ON TREATMENT SYSTEM
CHECK EACH APPLICABLE BLOCK		
X	Neutralization	
X	Chemical Precipitation and Sedimentation	
	Chromium Reduction	
	Cyanide Destruction	
	Other:	
	None	

C. THE INDUSTRIAL USER MUST PERFORM SAMPLING AND ANALYSIS OF THE EFFLUENT FROM ALL REGULATED PROCESSES—CORE & ANCILLARY—(AFTER TREATMENT, IF APPLICABLE). ATTACH THE LAB ANALYSIS WHICH SHOWS A MAXIMUM, TABULATE ALL THE ANALYTICAL DATA COLLECTED DURING THE REPORT PERIOD IN THE SPACE PROVIDED BELOW. ZERO CONCENTRATIONS ARE NOT ACCEPTABLE; LIST THE DETECTION LIMIT IF CONCENTRATION WAS BELOW DETECTION LIMIT.

Pollutant(mg/l)	Cd	Cr	Cu	Pb	Ni	Ag	Zn	CN*	TTO*
Max for 1 day	0.11	2.77	3.38	0.69	3.98	0.43	2.61	1.20	2.13
Monthly Ave.	0.07	1.71	2.07	0.43	2.38	0.24	1.48	0.65	--
Max Measured	<0.004	0.51	0.14	<0.04	0.28	<0.007	0.46	0.019	NA
Ave. Measured	<0.004	0.16	0.034	<0.04	0.085	<0.007	0.085	0.011	NA

\* PROVIDE THE CONCENTRATION HERE IF NO CERTIFICATION IS PROVIDED IN SECTION 6 BELOW OR MARK N/A IF A CERTIFICATION IS PROVIDED.

Sample Location:	See Attached Sampling Plan (Attachment #1)
Sample Type (Grab or Composite):	Grab (See Sample Plan Attachment #1)
Number of Samples and Frequency Collected:	10 (6/16/2009, 7/13/2009, 8/12/2009)
40CFR136 Preservation and Analytical Methods Use:	<input checked="" type="checkbox"/> Yes <input type="checkbox"/> No

**(6) CERTIFICATION**

A. CHECK ONE  CYANIDE ANALYSIS ATTACHED  EPA REGION VI CYANIDE CERTIFICATION PROVIDED BELOW

Based on my inquiry of the person or persons directly responsible for managing compliance with pretreatment standards, I certify that to the best of my knowledge, cyanide has not been used or generated in our processes which are regulated by the Metal Finishing (40 CFR 433) categorical pretreatment standards since the filing of the last semi-annual compliance report.

\_\_\_\_\_  
(Typed Name)

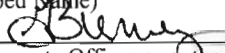
\_\_\_\_\_  
(Corporate Officer or authorized representative)

Date of Signature:

B. CHECK ONE  §433.11(e) TOXIC ORGANIC ANALYSIS ATTACHED  §433.12(a) TTO CERTIFICATION PROVIDED BELOW

Based on my inquiry of the person or persons directly responsible for managing compliance with pretreatment standard for total toxic organics (TTO), I certify that, to the best of my knowledge and belief, no dumping of concentrated toxic organics into the wastewaters has occurred since filing of the last semi-annual compliance report. I further certify that this facility is implementing the toxic organic management plan submitted to Arkansas Department of Pollution Control and Ecology.

Glenn Burney, Plant Manager  
\_\_\_\_\_  
(Typed Name)

  
\_\_\_\_\_  
(Corporate Officer or authorized representative)

Date of Signature: 2/9/10

**CORPORATE ACKNOWLEDGEMENT (Optional)**

State of Arkansas  
County of Baxter

Before me, the undersigned authority, on this day personally appeared \_\_\_\_\_ of \_\_\_\_\_,

a corporation, known to me to be the person whose name is subscribed to the foregoing instrument(s), and acknowledged to me that he executed the same for purposes and considerations therein expressed, in the capacity therein stated and as the act and deed of said corporation.

Given under my hand and seal of office on this 25<sup>th</sup> day of February, 2002.

\_\_\_\_\_  
Notary Public in and for Baxter  
County, Arkansas

**(7) POLLUTION PREVENTION ACT OF 1990 [42 U.S.C. 13101 et seq.]**

§6602 [42 U.S.C. 13101 et seq.] Findings and Policy para. (b) Policy – The congress hereby declares it to be the national policy of the United States that pollution should be prevented or reduces at the source whenever feasible; pollution that cannot be prevented should be recycled in an environmentally safe manner, whenever feasible; pollution that cannot be prevented or recycled should treated in an environmentally safe manner whenever feasible; and disposal or other release into the environment should be employed only as a last resort and should be conducted in an environmentally safe manner.

The User may list any new or ongoing Pollution Prevention practices:

Baxter sold the product line that produces the needles, the new company is currently in the process of transitioning the needles production process from the Mountain Home facility. Written notification will be made when the transition is complete.

**(8) GENERAL COMMENTS**

**Attachments included with submission:**

- Attachment #1            Needles Sampling Plan
- Attachment #2            Needles Wastewater Flow Schematic
- Attachment #3            Analytical Results

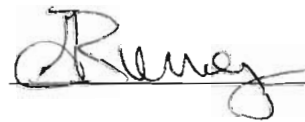
**(9) SIGNATORY REQUIREMENTS [40CFR403.12(I)]**

I certify under penalty of law that I have personally examined and am familiar with the information in this document and all attachments were prepared under my direction or supervision in accordance with a system designed to assure that qualified personnel properly gather and evaluate the information submitted. Based on my inquiry of the person or persons who manage the system, or those persons directly responsible for gathering the information, the information submitted is, to the best of my knowledge and belief, true, accurate, and complete. I am aware that there are significant penalties for submitting false information, including the possibility of fine and imprisonment for knowing violations.

Glenn Burney, Plant Manager

NAME OF CORPORATE OFFICER OR AUTHORIZED REPRESENTATIVE

SIGNATURE:



# Attachment #1

## Needles Sampling Plan (40 CFR 433 Subpart A)

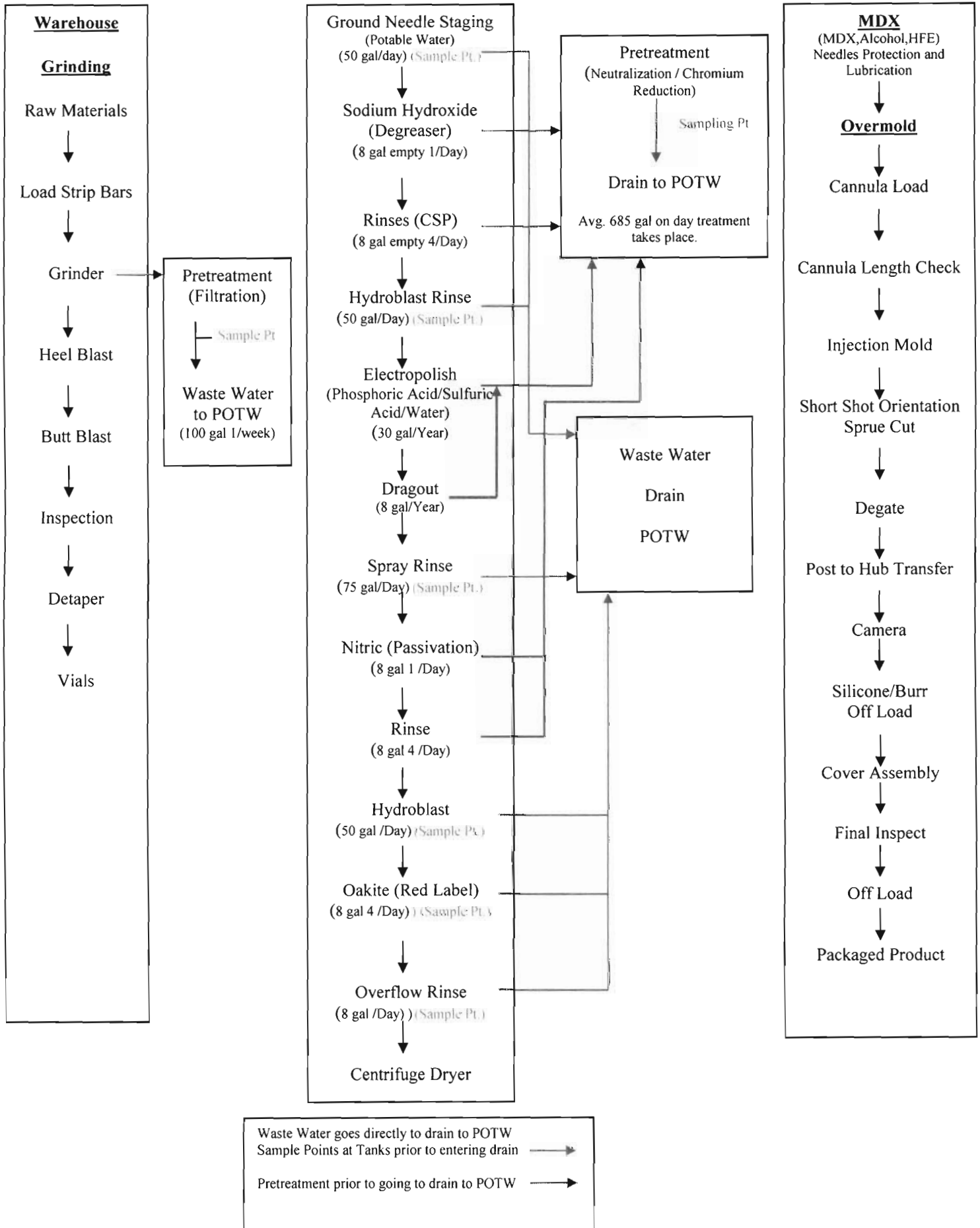
In accordance with 40 CFR Part 403.12(e) industrial users with processes regulated by categorical pretreatment standards (40 CFR Part 433, et al) are required to submit semi-annual reports to the ADEQ to demonstrate continued compliance when discharge from the regulated processes enter, can enter, or will enter a Publicly Owned Treatment Works (POTW). Reports are due February and August.

**Sampling Plan:** Sample once every 6 months. If noncompliance noted sample as needed to demonstrate compliance.

1. Sample will consist of one grab sample from pretreatment holding tank discharge point; holding tank discharge avg. 700 gal. with discharge time of 15 minutes. Pretreatment is performed on the Sodium Hydroxide bath and primary rinse water; Electropolish (Phosphoric Acid/Sulfuric Acid/Water); Nitric Acid bath and primary rinse water.
2. Sample will consist of one grab sample at the end of the batch prior to water entering drain from each separate operation: Ground Needle Staging; Hydroblast Rinse, Spray Rinse, Hydroblast Rinse, Oakite Process; Overflow rinse, filtered grinding waste water.
3. Sample effluent data to be reported semi-annually (February and August).

# Attachment #2

## Needles (40CFR 433 Subpart A)



Attachment #3

January 20, 2010  
Control No. 135379  
Page 1 of 6

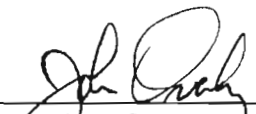


Baxter Healthcare Corporation  
ATTN: Ms. Carolyn Walker  
1900 North Highway 201  
Mountain Home, AR 72653

This report contains the analytical results and supporting information for samples submitted on January 15, 2010. Attached please find a copy of the Chain of Custody and/or other documents received. Note that any remaining sample will be discarded two weeks from the original report date unless other arrangements are made.

This report is intended for the sole use of the client listed above. Assessment of the data requires access to the entire document.

This report has been reviewed by the Laboratory Director or a qualified designee.



---

John Overbey  
Laboratory Director



Baxter Healthcare Corporation  
1900 North Highway 201  
Mountain Home, AR 72653

**SAMPLE INFORMATION**

**Project Description:**

Four (4) water sample(s) received on January 15, 2010  
Needles Wastewater

**Receipt Details:**

A complete Chain of Custody was provided. The samples were delivered in one (1) ice chest.  
Ice chest #1 was delivered with shipping documentation.

Each sample container was checked for proper labeling, including date and time sampled. Sample containers were reviewed for proper type, adequate volume, integrity, temperature, preservation, and holding times. Any exceptions are noted below:

**Sample Identification:**

Laboratory ID	Client Sample ID	Sampled Date/Time	Notes
135379-1	Grinder Wastewater 1-12-10 10:15	12-Jan-2010 1015	
135379-2	Grind Ndl Staging 1-12-10 09:45	12-Jan-2010 0945	
135379-3	Spray Rinse 1-12-10 10:05	12-Jan-2010 1005	
135379-4	Overflow Rinse 1-12-10 09:55	12-Jan-2010 0955	

**Case Narrative:**

There were no qualifiers for this data and all samples met quality control criteria.

**Quality Control Statement:**

Data has been validated using standard quality control measures performed on at least 10% of the samples analyzed. Quality Assurance, instrumentation, maintenance and calibration were performed in accordance with guidelines established by the cited methodology.

**References:**

- "Methods for Chemical Analysis of Water and Wastes", EPA/600/4-79-020 (Mar 1983) with updates and supplements EPA/600/5-91-010 (Jun 1991), EPA/600/R-92-129 (Aug 1992) and EPA/600/R-93-100 (Aug 1993).
- "Test Methods for Evaluating Solid Waste Physical/Chemical Methods (SW846)", Third Edition.
- "Standard Methods for the Examination of Water and Wastewaters", 20th edition, 1998.
- "American Society for Testing and Materials" (ASTM).
- "Association of Analytical Chemists" (AOAC).



Baxter Healthcare Corporation  
1900 North Highway 201  
Mountain Home, AR 72653

**ANALYTICAL RESULTS**

**AIC No.** 135379-1

**Sample Identification:** Grinder Wastewater 1-12-10 10:15

<b>Analyte</b>		<b>Result</b>	<b>RL</b>	<b>Units</b>	<b>Qualifier</b>
<b>Total Cyanide</b> SM4500-CN C,E	Prep: 18-Jan-2010 1430 by 291	<b>0.019</b>	0.01	<b>mg/l</b>	
		Analyzed: 19-Jan-2010 1500 by 291		Batch: W31428	
<b>Cadmium</b> EPA 200.7	Prep: 18-Jan-2010 0955 by 270	<b>&lt; 0.004</b>	0.004	<b>mg/l</b>	
		Analyzed: 18-Jan-2010 1758 by 270		Batch: S27055	
<b>Chromium</b> EPA 200.7	Prep: 18-Jan-2010 0955 by 270	<b>0.51</b>	0.007	<b>mg/l</b>	
		Analyzed: 18-Jan-2010 1758 by 270		Batch: S27055	
<b>Copper</b> EPA 200.7	Prep: 18-Jan-2010 0955 by 270	<b>0.026</b>	0.006	<b>mg/l</b>	
		Analyzed: 18-Jan-2010 1758 by 270		Batch: S27055	
<b>Lead</b> EPA 200.7	Prep: 18-Jan-2010 0955 by 270	<b>&lt; 0.04</b>	0.04	<b>mg/l</b>	
		Analyzed: 18-Jan-2010 1758 by 270		Batch: S27055	
<b>Nickel</b> EPA 200.7	Prep: 18-Jan-2010 0955 by 270	<b>0.28</b>	0.01	<b>mg/l</b>	
		Analyzed: 18-Jan-2010 1758 by 270		Batch: S27055	
<b>Silver</b> EPA 200.7	Prep: 18-Jan-2010 0955 by 270	<b>&lt; 0.007</b>	0.007	<b>mg/l</b>	
		Analyzed: 18-Jan-2010 1758 by 270		Batch: S27055	
<b>Zinc</b> EPA 200.7	Prep: 18-Jan-2010 0955 by 270	<b>0.46</b>	0.002	<b>mg/l</b>	
		Analyzed: 18-Jan-2010 1758 by 270		Batch: S27055	

**AIC No.** 135379-2

**Sample Identification:** Grind Ndl Staging 1-12-10 09:45

<b>Analyte</b>		<b>Result</b>	<b>RL</b>	<b>Units</b>	<b>Qualifier</b>
<b>Total Cyanide</b> SM4500-CN C,E	Prep: 18-Jan-2010 1430 by 291	<b>&lt; 0.01</b>	0.01	<b>mg/l</b>	
		Analyzed: 19-Jan-2010 1501 by 291		Batch: W31428	
<b>Cadmium</b> EPA 200.7	Prep: 18-Jan-2010 0955 by 270	<b>&lt; 0.004</b>	0.004	<b>mg/l</b>	
		Analyzed: 18-Jan-2010 1801 by 270		Batch: S27055	
<b>Chromium</b> EPA 200.7	Prep: 18-Jan-2010 0955 by 270	<b>&lt; 0.007</b>	0.007	<b>mg/l</b>	
		Analyzed: 18-Jan-2010 1801 by 270		Batch: S27055	
<b>Copper</b> EPA 200.7	Prep: 18-Jan-2010 0955 by 270	<b>0.017</b>	0.006	<b>mg/l</b>	
		Analyzed: 18-Jan-2010 1801 by 270		Batch: S27055	
<b>Lead</b> EPA 200.7	Prep: 18-Jan-2010 0955 by 270	<b>&lt; 0.04</b>	0.04	<b>mg/l</b>	
		Analyzed: 18-Jan-2010 1801 by 270		Batch: S27055	
<b>Nickel</b> EPA 200.7	Prep: 18-Jan-2010 0955 by 270	<b>0.019</b>	0.01	<b>mg/l</b>	
		Analyzed: 18-Jan-2010 1801 by 270		Batch: S27055	
<b>Silver</b> EPA 200.7	Prep: 18-Jan-2010 0955 by 270	<b>&lt; 0.007</b>	0.007	<b>mg/l</b>	
		Analyzed: 18-Jan-2010 1801 by 270		Batch: S27055	
<b>Zinc</b> EPA 200.7	Prep: 18-Jan-2010 0955 by 270	<b>0.015</b>	0.002	<b>mg/l</b>	
		Analyzed: 18-Jan-2010 1801 by 270		Batch: S27055	

**AIC No.** 135379-3

**Sample Identification:** Spray Rinse 1-12-10 10:05

<b>Analyte</b>		<b>Result</b>	<b>RL</b>	<b>Units</b>	<b>Qualifier</b>
<b>Total Cyanide</b> SM4500-CN C,E	Prep: 18-Jan-2010 1430 by 291	<b>&lt; 0.01</b>	0.01	<b>mg/l</b>	
		Analyzed: 19-Jan-2010 1503 by 291		Batch: W31428	

Baxter Healthcare Corporation  
1900 North Highway 201  
Mountain Home, AR 72653

**ANALYTICAL RESULTS**

**AIC No. 135379-3 (Continued)**

**Sample Identification:** Spray Rinse 1-12-10 10:05

<u>Analyte</u>		<u>Result</u>	<u>RL</u>	<u>Units</u>	<u>Qualifier</u>
<b>Cadmium</b> EPA 200.7	Prep: 18-Jan-2010 0955 by 270	<b>&lt; 0.004</b>	0.004	<b>mg/l</b>	
		Analyzed: 18-Jan-2010 1805 by 270		Batch: S27055	
<b>Chromium</b> EPA 200.7	Prep: 18-Jan-2010 0955 by 270	<b>0.20</b>	0.007	<b>mg/l</b>	
		Analyzed: 18-Jan-2010 1805 by 270		Batch: S27055	
<b>Copper</b> EPA 200.7	Prep: 18-Jan-2010 0955 by 270	<b>0.14</b>	0.006	<b>mg/l</b>	
		Analyzed: 18-Jan-2010 1805 by 270		Batch: S27055	
<b>Lead</b> EPA 200.7	Prep: 18-Jan-2010 0955 by 270	<b>&lt; 0.04</b>	0.04	<b>mg/l</b>	
		Analyzed: 18-Jan-2010 1805 by 270		Batch: S27055	
<b>Nickel</b> EPA 200.7	Prep: 18-Jan-2010 0955 by 270	<b>0.097</b>	0.01	<b>mg/l</b>	
		Analyzed: 18-Jan-2010 1805 by 270		Batch: S27055	
<b>Silver</b> EPA 200.7	Prep: 18-Jan-2010 0955 by 270	<b>&lt; 0.007</b>	0.007	<b>mg/l</b>	
		Analyzed: 18-Jan-2010 1805 by 270		Batch: S27055	
<b>Zinc</b> EPA 200.7	Prep: 18-Jan-2010 0955 by 270	<b>0.12</b>	0.002	<b>mg/l</b>	
		Analyzed: 18-Jan-2010 1805 by 270		Batch: S27055	

**AIC No. 135379-4**

**Sample Identification:** Overflow Rinse 1-12-10 09:55

<u>Analyte</u>		<u>Result</u>	<u>RL</u>	<u>Units</u>	<u>Qualifier</u>
<b>Total Cyanide</b> SM4500-CN C,E	Prep: 18-Jan-2010 1430 by 291	<b>&lt; 0.01</b>	0.01	<b>mg/l</b>	
		Analyzed: 19-Jan-2010 1505 by 291		Batch: W31428	
<b>Cadmium</b> EPA 200.7	Prep: 18-Jan-2010 0955 by 270	<b>&lt; 0.004</b>	0.004	<b>mg/l</b>	
		Analyzed: 18-Jan-2010 1754 by 270		Batch: S27055	
<b>Chromium</b> EPA 200.7	Prep: 18-Jan-2010 0955 by 270	<b>&lt; 0.007</b>	0.007	<b>mg/l</b>	
		Analyzed: 18-Jan-2010 1754 by 270		Batch: S27055	
<b>Copper</b> EPA 200.7	Prep: 18-Jan-2010 0955 by 270	<b>&lt; 0.006</b>	0.006	<b>mg/l</b>	
		Analyzed: 18-Jan-2010 1754 by 270		Batch: S27055	
<b>Lead</b> EPA 200.7	Prep: 18-Jan-2010 0955 by 270	<b>&lt; 0.04</b>	0.04	<b>mg/l</b>	
		Analyzed: 18-Jan-2010 1754 by 270		Batch: S27055	
<b>Nickel</b> EPA 200.7	Prep: 18-Jan-2010 0955 by 270	<b>&lt; 0.01</b>	0.01	<b>mg/l</b>	
		Analyzed: 18-Jan-2010 1754 by 270		Batch: S27055	
<b>Silver</b> EPA 200.7	Prep: 18-Jan-2010 0955 by 270	<b>&lt; 0.007</b>	0.007	<b>mg/l</b>	
		Analyzed: 18-Jan-2010 1754 by 270		Batch: S27055	
<b>Zinc</b> EPA 200.7	Prep: 18-Jan-2010 0955 by 270	<b>0.0036</b>	0.002	<b>mg/l</b>	
		Analyzed: 18-Jan-2010 1754 by 270		Batch: S27055	



LABORATORIES

CHAIN OF CUSTODY / ANALYSIS REQUEST FORM

PAGE 1 OF 1

Client: <u>Baxter Healthcare</u>		Project Reference: <u>Needles Washwater</u>		Project Manager: <u>Carolyn Walker</u>		Sampled By: <u>[Signature]</u>		AIC CONTROL NO: <u>135379</u>		AIC PROPOSAL NO:		Carrier/Tracking No. <u>Del-X</u>		Received Temperature <u>C</u>		Remarks	
PO No.		NO OF BOTTLES		ANALYSES REQUESTED		NO OF BOTTLES		NO OF BOTTLES		NO OF BOTTLES		NO OF BOTTLES		NO OF BOTTLES		NO OF BOTTLES	
SAMPLE MATRIX		WATER		SOIL		COMPOST		GRAVEL		SLUDGE		SOLID		LIQUID		OTHER	
Sample No.		Date/Time Collected		Container Type		Preservative		G = Glass		NO = none		P = Plastic		S = Sulfuric acid pH2		V = VOA vials	
1		1-12-10 10:15		Waste water		None		None		None		None		None		None	
2		1-22-10 09:45		Grinding Sludge		None		None		None		None		None		None	
3		1-12-10 10:00		Hydroblast		None		None		None		None		None		None	
4		1-12-10 10:05		Sparging Rinse		None		None		None		None		None		None	
5		1-10-10 10:10		Hydroblast 2		None		None		None		None		None		None	
6		1-12-10 09:50		Dakota Bath		None		None		None		None		None		None	
7		1-12-10 08:55		Oxyflow Rinse		None		None		None		None		None		None	
Turnaround Time Requested: (Please circle)		NORMAL or EXPEDITED IN _____ DAYS		Expedited results requested by:		Who should AIC contact with questions: <u>Carolyn Walker</u>		Phone: <u>870-424-5336</u> Fax: <u>870-424-5200</u>		Report Attention to: <u>Carolyn Walker</u>		Report Address to: <u>Baxter Healthcare Corp</u>		1900 Hwy 301 N		Mtn. Home, AR 72653	
Relinquished		By: <u>[Signature]</u>		Relinquished		By: <u>[Signature]</u>		Relinquished		By: <u>[Signature]</u>		Relinquished		By: <u>[Signature]</u>		Relinquished	
Date/Time		Date/Time		Date/Time		Date/Time		Date/Time		Date/Time		Date/Time		Date/Time		Date/Time	
1-13-09 15:28		1-13-09 15:28		1-13-09 15:28		1-13-09 15:28		1-13-09 15:28		1-13-09 15:28		1-13-09 15:28		1-13-09 15:28		1-13-09 15:28	
Received		By: <u>[Signature]</u>		Received		By: <u>[Signature]</u>		Received		By: <u>[Signature]</u>		Received		By: <u>[Signature]</u>		Received	
Date/Time		Date/Time		Date/Time		Date/Time		Date/Time		Date/Time		Date/Time		Date/Time		Date/Time	
1-13-09 15:28		1-13-09 15:28		1-13-09 15:28		1-13-09 15:28		1-13-09 15:28		1-13-09 15:28		1-13-09 15:28		1-13-09 15:28		1-13-09 15:28	
Comments:		Required Reporting Limit for Metals must be identified on back of COC.		Required Reporting Limit for Metals must be identified on back of COC.		Required Reporting Limit for Metals must be identified on back of COC.		Required Reporting Limit for Metals must be identified on back of COC.		Required Reporting Limit for Metals must be identified on back of COC.		Required Reporting Limit for Metals must be identified on back of COC.		Required Reporting Limit for Metals must be identified on back of COC.		Required Reporting Limit for Metals must be identified on back of COC.	

# 1 CHAIN OF CUSTODY / REQUESTED METAL REPORTING LEVELS

Please assist by identifying the required reporting level for the metals requested.

		Waters EPA 200.8/6020					
Metals	Standard, mg/L	Low-Level, mg/L	PPS Levels, ug/l	Client Specified <sup>2</sup>	Units Requested <sup>3</sup>		
All	<input checked="" type="checkbox"/>	<input type="checkbox"/>	<input type="checkbox"/>		mg/L ug/L		
Aluminum	0.04			Aluminium			
Arsenic	0.05	0.001	0.5	Arsenic			
Antimony	0.03	0.003	60	Antimony			
Boron	0.1			Boron			
Barium	0.002			Barium			
Beryllium	0.0003	0.0002	0.5	Beryllium			
Calcium	0.1			Calcium			
Cadmium	0.004	0.0001	0.5	Cadmium			
Cobalt	0.007			Cobalt			
Chromium	0.007	0.001	10	Chromium			
Copper	0.006	0.001	0.5	Copper			
Iron	0.02			Iron			
Potassium	1			Potassium			
Magnesium	0.03			Magnesium			
Manganese	0.002			Manganese			
Molybdenum	0.008			Molybdenum			
Nickel	0.01	0.001	0.5	Nickel			
Lead	0.04	0.001	0.5	Lead			
Selenium	0.07	0.002	5	Selenium			
Silver	0.007	0.0002	0.5	Silver			
Thallium	0.04	0.001	0.5	Thallium			
Vanadium	0.008			Vanadium			
Zinc	0.002		20	Zinc			
Mercury			5				
EPA 245.2/7470A, mg/l	0.0002						
Hg.LL.EPA 245.7, ng/l	5						
Hg.1631 EPA 1631, ng/l	0.5						

<sup>2</sup>Achievement of Client Specific levels if less than the low-level requested will need to be evaluated by laboratory.

<sup>3</sup> Default units will be as mg/L for standard and low-level and ug/l for PPS levels.

<sup>4</sup> Low-level Hg analysis requires special containers.



A Hachment # 3  
Cont'd

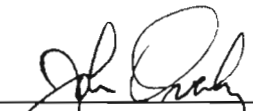
February 4, 2010  
Control No. 135787  
Page 1 of 5

Baxter Healthcare Corporation  
ATTN: Ms. Carolyn Walker  
1900 North Highway 201  
Mountain Home, AR 72653

This report contains the analytical results and supporting information for the sample submitted on January 29, 2010. Attached please find a copy of the Chain of Custody and/or other documents received. Note that any remaining sample will be discarded two weeks from the original report date unless other arrangements are made.

This report is intended for the sole use of the client listed above. Assessment of the data requires access to the entire document.

This report has been reviewed by the Laboratory Director or a qualified designee.



---

John Overbey  
Laboratory Director

Baxter Healthcare Corporation  
1900 North Highway 201  
Mountain Home, AR 72653

**ANALYTICAL RESULTS**

AIC No. 135787-1

Sample Identification: Pretreatment Tank 1-26-10 / 9:35am

<b>Analyte</b>		<b>Result</b>	<b>RL</b>	<b>Units</b>	<b>Qualifier</b>
<b>Total Cyanide</b> SM4500-CN C,E	Prep: 02-Feb-2010 0823 by 291	<b>&lt; 0.01</b> Analyzed: 02-Feb-2010 1709 by 291	0.01	<b>mg/l</b> Batch: W31600	
<b>Cadmium</b> EPA 200.8	Prep: 01-Feb-2010 1544 by 286	<b>&lt; 0.004</b> Analyzed: 03-Feb-2010 2042 by 270	0.004	<b>mg/l</b> Batch: S27135	
<b>Chromium</b> EPA 200.8	Prep: 01-Feb-2010 1544 by 286	<b>0.26</b> Analyzed: 03-Feb-2010 2042 by 270	0.007	<b>mg/l</b> Batch: S27135	
<b>Copper</b> EPA 200.8	Prep: 01-Feb-2010 1544 by 286	<b>0.021</b> Analyzed: 03-Feb-2010 2042 by 270	0.006	<b>mg/l</b> Batch: S27135	
<b>Lead</b> EPA 200.8	Prep: 01-Feb-2010 1544 by 286	<b>&lt; 0.04</b> Analyzed: 03-Feb-2010 2042 by 270	0.04	<b>mg/l</b> Batch: S27135	
<b>Nickel</b> EPA 200.8	Prep: 01-Feb-2010 1544 by 286	<b>0.11</b> Analyzed: 03-Feb-2010 2042 by 270	0.01	<b>mg/l</b> Batch: S27135	
<b>Silver</b> EPA 200.8	Prep: 01-Feb-2010 1544 by 286	<b>&lt; 0.007</b> Analyzed: 03-Feb-2010 2042 by 270	0.007	<b>mg/l</b> Batch: S27135	
<b>Zinc</b> EPA 200.8	Prep: 01-Feb-2010 1544 by 286	<b>0.020</b> Analyzed: 03-Feb-2010 2042 by 270	0.002	<b>mg/l</b> Batch: S27135	



CHAIN OF CUSTODY / ANALYSIS REQUEST FORM

PAGE 1 OF 1

Client: <u>Carver Healthcare Corp</u>	Project Reference: <u>Needles Wastewater</u>	Project Manager: <u>Carolyn Walker</u>	Sampled By: <u>Wiggins</u>	AIC No. <u>1</u>	Sample Identification: <u>Pretreatment Tank</u>	Date/Time Collected: <u>1-24-10 9:35 a.m.</u>	Container Type: <u>Plastic</u>	Preservative: <u>None</u>	Turnaround Time Requested: <u>Normal</u> or EXPEDITED IN <u>  </u> DAYS	Expedited results requested by: <u>  </u>	Who should AIC contact with questions: <u>Carolyn Walker</u>	Phone: <u>870-429-5336</u> Fax: <u>870-429-5200</u>	Report Attention to: <u>Carolyn Walker</u>	Report Address to: <u>Carver Healthcare Corp 1900 W. Highway 101 Mtn. Home, AR 72653</u>	
AIC CONTROL NO: <u>135787</u>		AIC PROPOSAL NO: <u>  </u>		Carrier: <u>Upl-X</u>		Received Temperature: <u>2</u>		Remarks: <u>  </u>		Field pH calibration on <u>  </u> @ <u>  </u>		Buffer: <u>  </u>		T = Sodium Thiosulfate Z = Zinc acetate	
ANALYSES REQUESTED										Received		Date/Time			
NO OF BOTTLES										By: <u>Brew Flickinger</u>		1-27-10 12:19 PM			
WATER										Relinquished		Date/Time			
ASOIL										By: <u>Wiggins</u>		1-27-10 10:13			
GRA B										Relinquished		Date/Time			
COMP										By: <u>  </u>					
NO OF BOTTLES										Comments: <u>  </u>					
Cd, Cr, Cu															
Pb, Ni, Ag															
Zn															
T. Cyanide															



Baxter Healthcare Corporation  
1900 North Highway 201  
Mountain Home, AR 72653

### SAMPLE INFORMATION

#### Project Description:

Three (3) water sample(s) received on January 29, 2010  
NPDES Monitoring

#### Receipt Details:

A complete Chain of Custody was provided. The samples were delivered in one (1) ice chest.  
Ice chest #1 was delivered without shipping documentation.

Each sample container was checked for proper labeling, including date and time sampled. Sample containers were reviewed for proper type, adequate volume, integrity, temperature, preservation, and holding times. Any exceptions are noted below:

#### Sample Identification:

<u>Laboratory ID</u>	<u>Client Sample ID</u>	<u>Sampled Date/Time</u>	<u>Notes</u>
135785-1	Hydroblast Rinse 1	1-26-10 1000am	
135785-2	Hydroblast 2	1-26-10 1030am	
135785-3	Oakite Bath	1-26-10 1010am	

#### Qualifiers:

X Spiking level is invalid due to the high concentration of analyte in the spiked sample

#### Quality Control Statement:

Data has been validated using standard quality control measures performed on at least 10% of the samples analyzed. Quality Assurance, instrumentation, maintenance and calibration were performed in accordance with guidelines established by the cited methodology.

#### References:

"Methods for Chemical Analysis of Water and Wastes", EPA/600/4-79-020 (Mar 1983) with updates and supplements EPA/600/5-91-010 (Jun 1991), EPA/600/R-92-129 (Aug 1992) and EPA/600/R-93-100 (Aug 1993).  
"Test Methods for Evaluating Solid Waste Physical/Chemical Methods (SW846)", Third Edition.  
"Standard Methods for the Examination of Water and Wastewaters", 20th edition, 1998.  
"American Society for Testing and Materials" (ASTM).  
"Association of Analytical Chemists" (AOAC).



Baxter Healthcare Corporation  
 1900 North Highway 201  
 Mountain Home, AR 72653

**ANALYTICAL RESULTS**
**AIC No. 135785-1**
**Sample Identification:** Hydroblast Rinse 1 1-26-10 1000am

Analyte	Result	RL	Units	Qualifier
<b>Total Cyanide</b> SM4500-CN C,E	<b>&lt; 0.01</b>	0.01	<b>mg/l</b>	
Prep: 01-Feb-2010 1020 by 291	Analyzed: 02-Feb-2010 0818 by 258		Batch: W31589	
<b>Cadmium</b> EPA 200.8	<b>&lt; 0.004</b>	0.004	<b>mg/l</b>	
Prep: 01-Feb-2010 1544 by 286	Analyzed: 02-Feb-2010 0002 by 270		Batch: S27135	
<b>Chromium</b> EPA 200.8	<b>0.17</b>	0.007	<b>mg/l</b>	
Prep: 01-Feb-2010 1544 by 286	Analyzed: 02-Feb-2010 0002 by 270		Batch: S27135	
<b>Copper</b> EPA 200.8	<b>0.042</b>	0.006	<b>mg/l</b>	
Prep: 01-Feb-2010 1544 by 286	Analyzed: 02-Feb-2010 0002 by 270		Batch: S27135	
<b>Lead</b> EPA 200.8	<b>&lt; 0.04</b>	0.04	<b>mg/l</b>	
Prep: 01-Feb-2010 1544 by 286	Analyzed: 02-Feb-2010 0002 by 270		Batch: S27135	
<b>Nickel</b> EPA 200.8	<b>0.10</b>	0.01	<b>mg/l</b>	
Prep: 01-Feb-2010 1544 by 286	Analyzed: 02-Feb-2010 0002 by 270		Batch: S27135	
<b>Silver</b> EPA 200.8	<b>&lt; 0.007</b>	0.007	<b>mg/l</b>	
Prep: 01-Feb-2010 1544 by 270	Analyzed: 03-Feb-2010 1957 by 270		Batch: S27135	
<b>Zinc</b> EPA 200.8	<b>0.022</b>	0.002	<b>mg/l</b>	
Prep: 01-Feb-2010 1544 by 286	Analyzed: 02-Feb-2010 0002 by 270		Batch: S27135	

**AIC No. 135785-2**
**Sample Identification:** Hydroblast 2 1-26-10 1030am

Analyte	Result	RL	Units	Qualifier
<b>Total Cyanide</b> SM4500-CN C,E	<b>&lt; 0.01</b>	0.01	<b>mg/l</b>	
Prep: 02-Feb-2010 0823 by 291	Analyzed: 02-Feb-2010 1702 by 291		Batch: W31600	
<b>Cadmium</b> EPA 200.8	<b>&lt; 0.004</b>	0.004	<b>mg/l</b>	
Prep: 01-Feb-2010 1544 by 286	Analyzed: 02-Feb-2010 0011 by 270		Batch: S27135	
<b>Chromium</b> EPA 200.8	<b>0.12</b>	0.007	<b>mg/l</b>	
Prep: 01-Feb-2010 1544 by 286	Analyzed: 02-Feb-2010 0011 by 270		Batch: S27135	
<b>Copper</b> EPA 200.8	<b>0.011</b>	0.006	<b>mg/l</b>	
Prep: 01-Feb-2010 1544 by 286	Analyzed: 02-Feb-2010 0011 by 270		Batch: S27135	
<b>Lead</b> EPA 200.8	<b>&lt; 0.04</b>	0.04	<b>mg/l</b>	
Prep: 01-Feb-2010 1544 by 286	Analyzed: 02-Feb-2010 0011 by 270		Batch: S27135	
<b>Nickel</b> EPA 200.8	<b>0.057</b>	0.01	<b>mg/l</b>	
Prep: 01-Feb-2010 1544 by 286	Analyzed: 02-Feb-2010 0011 by 270		Batch: S27135	
<b>Silver</b> EPA 200.8	<b>&lt; 0.007</b>	0.007	<b>mg/l</b>	
Prep: 01-Feb-2010 1544 by 286	Analyzed: 03-Feb-2010 2024 by 270		Batch: S27135	
<b>Zinc</b> EPA 200.8	<b>0.030</b>	0.002	<b>mg/l</b>	
Prep: 01-Feb-2010 1544 by 286	Analyzed: 02-Feb-2010 0011 by 270		Batch: S27135	

**AIC No. 135785-3**
**Sample Identification:** Oakite Bath 1-26-10 1010am

Analyte	Result	RL	Units	Qualifier
<b>Total Cyanide</b> SM4500-CN C,E	<b>&lt; 0.01</b>	0.01	<b>mg/l</b>	
Prep: 02-Feb-2010 0823 by 291	Analyzed: 02-Feb-2010 1707 by 291		Batch: W31600	

Baxter Healthcare Corporation  
1900 North Highway 201  
Mountain Home, AR 72653

**ANALYTICAL RESULTS**

AIC No. 135785-3 (Continued)

Sample Identification: Oakite Bath 1-26-10 1010am

<u>Analyte</u>		<u>Result</u>	<u>RL</u>	<u>Units</u>	<u>Qualifier</u>
<b>Cadmium</b> EPA 200.8	Prep: 01-Feb-2010 1544 by 286	<b>&lt; 0.004</b>	0.004	<b>mg/l</b>	
		Analyzed: 02-Feb-2010 0020 by 270		Batch: S27135	
<b>Chromium</b> EPA 200.8	Prep: 01-Feb-2010 1544 by 286	<b>&lt; 0.007</b>	0.007	<b>mg/l</b>	
		Analyzed: 02-Feb-2010 0020 by 270		Batch: S27135	
<b>Copper</b> EPA 200.8	Prep: 01-Feb-2010 1544 by 286	<b>&lt; 0.006</b>	0.006	<b>mg/l</b>	
		Analyzed: 02-Feb-2010 0020 by 270		Batch: S27135	
<b>Lead</b> EPA 200.8	Prep: 01-Feb-2010 1544 by 286	<b>&lt; 0.04</b>	0.04	<b>mg/l</b>	
		Analyzed: 02-Feb-2010 0020 by 270		Batch: S27135	
<b>Nickel</b> EPA 200.8	Prep: 01-Feb-2010 1544 by 286	<b>&lt; 0.01</b>	0.01	<b>mg/l</b>	
		Analyzed: 02-Feb-2010 0020 by 270		Batch: S27135	
<b>Silver</b> EPA 200.8	Prep: 01-Feb-2010 1544 by 286	<b>&lt; 0.007</b>	0.007	<b>mg/l</b>	
		Analyzed: 03-Feb-2010 2033 by 270		Batch: S27135	
<b>Zinc</b> EPA 200.8	Prep: 01-Feb-2010 1544 by 286	<b>0.0083</b>	0.002	<b>mg/l</b>	
		Analyzed: 02-Feb-2010 0020 by 270		Batch: S27135	



CHAIN OF CUSTODY / ANALYSIS REQUEST FORM

Client: <u>Baxter Healthcare Corp</u>		PO No.		NO OF BOTTLES		ANALYSES REQUESTED		AIC CONTROL NO: <u>135785</u>	
Project Reference: <u>Needles Wash Water</u>		SAMPLE MATRIX		WATER		Cd, Cr, Cu, Pb, Ni, Ag, Zn, T. Cyanide		AIC PROPOSAL NO:	
Project Manager: <u>Carolyn Walker</u>		G R A B		C O M P				Carrier: <u>Uel-x</u>	
Sampled By: <u>M. J. J. J.</u>		Date/Time Collected		Date/Time Collected				Received Temperature C <u>2</u>	
AIC No.	Sample Identification	Date/Time Collected	G R A B	C O M P	WATER	NO OF BOTTLES	ANALYSES REQUESTED	Remarks	
1	Hydroblast Rinse 1	1-26-10 10:30 AM	✓	✓	✓	2	✓		
2	Hydroblast 2	1-26-10 10:30 AM	✓	✓	✓	2	✓		
3	Oakite Bath	1-26-10 10:10 AM	✓	✓	✓	2	✓		
								Field pH calibration on _____ @ _____ Buffer: _____	
Turnaround Time Requested: (Please circle) <u>NORMAL</u> or EXPEDITED IN _____ DAYS		G = Glass NO = none P = Plastic S = Sulfuric acid pH2		V = VOA vials N = Nitric acid pH2		H = HCl to pH2 B = NaOH to pH12		T = Sodium Thiosulfate Z = Zinc acetate	
Expedited results requested by:		Who should AIC contact with questions: <u>Carolyn Walker</u>		Relinquished By: <u>M. J. J. J.</u>		Date/Time <u>1-27-10 12:13</u>		Received By: <u>Byron Flickinger</u> Date/Time <u>1-27-10 12:19 PM</u>	
Phone: <u>870-404-5336</u> Fax: <u>870-404-5020</u>		Report Attention to: <u>Carolyn Walker</u>		Relinquished By:		Date/Time		Received in Lab By: <u>Luzer Hopfen</u> Date/Time <u>1-29-10 09:00</u>	
Report Address to: <u>Baxter Healthcare Corp</u>		1990 Hwy 201 N		Comments:					
		Mtn Home, AR 72653							